

TADANO

GT-250E

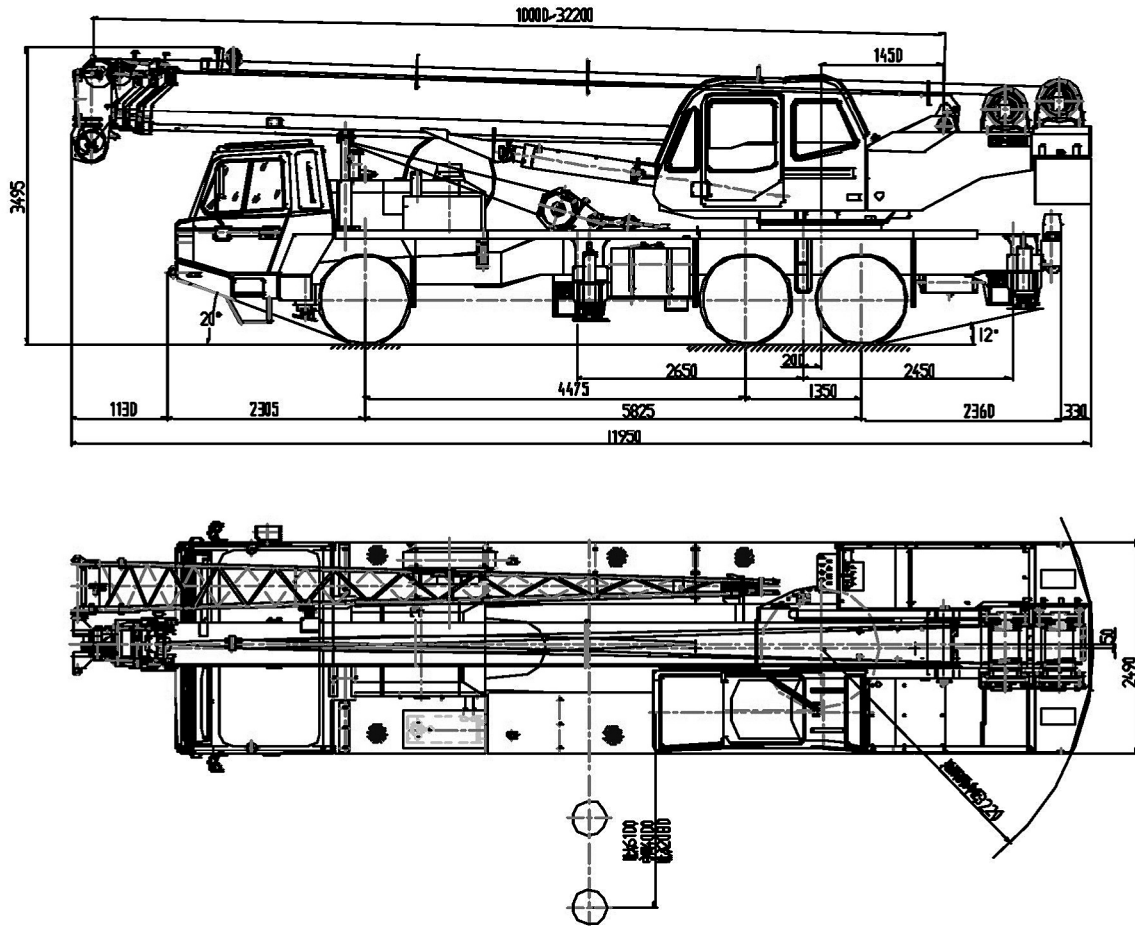
Crane Capacity: 25,000kg

Euro-3

No.: GT-250E-1-B0101

Hydraulic Truck Crane

Dimensions



MASS

Gross Vehicle Mass: 28600 kg

Front axle mass: 6700 kg

Rear axle mass: 21900 kg

PERFORMANCE

Max. traveling speed: 72 km/h

Gradeability(tan θ): 37%

Min. Turning radius: 11000 mm

Minimum Ground Clearance: 320 mm

1. UPPER STRUCTURE SPECIFICATIONS

BOOM

4-section full power partially synchronized telescoping boom of hexagonal box construction with 4 sheaves at boom head. The synchronization system consists of 2 telescope cylinders, extension cables and retraction cables. Hydraulic cylinders fitted with holding valves.

Fully retracted length -----10.0 m

Fully extended length ----- 32.2 m

Extension speed ----- 22.2 m in 104s

JIB

1-staged boom extension type. Double offset (5 °/30 °) type. Stored under base boom section. Single sheave at jib head.

Length --- 8.0 m

SINGLE TOP

Mounted to main boom head for single line work.

ELEVATION

By a double-acting hydraulic cylinder, fitted with holding valve.

Automatic Speed Reduction and Soft Stop function.

Elevation speed -----2°-80°in /52s

HOIST--Main winch

Variable speed type with grooved drum driven by hydraulic axial piston motor through winch speed reducer. Power load lowering and hoisting. Equipped with automatic, brake (Neutral brake) and counterbalance valve. Controlled independently of auxiliary winch.

Single line pull -----30.7kN (3130kg)

Single line speed ----118m/min (at the 4th layer)

Diameter-----16mm

Length-----175 m

HOIST-Auxiliary winch

Variable speed type with grooved drum driven by hydraulic axial piston motor through winch speed reducer. Power load lowering and hoisting. Equipped with automatic brake and counterbalance valve. Controlled independently of main winch.

Single line pull -----34.3 kN (3,500kg)

Single line speed -----102 m/min (at the 2nd layer)

Diameter. -----16 mm

Length-----90 m

SWING

Hydraulic axial piston motor driven through planetary speed reducer. Continuous 360~ full circle swing on ball bearing slew ring. Automatic Speed reduction and soft stop function. Equipped with manually locked/released swing brake.

Swing speed -----2.5r /min

HYDRAULIC SYSTEM

Pumps-----Quadruple gear pumps driven by carrier engine through P.T.O.

Control valves-----Multiple valves actuated by pilot pressure with integral pressure relief valves.

Circuit-----Equipped with air cooled type oil cooler. Oil pressure appears on AML display for main circuit.

Oil tank capacity-----approx. 467liters

Filters -----Return line filter

CAB AND CONTROLS

By 4 control levers for swing, boom hoist, main winch, boom telescoping or auxiliary winch with 2 control pedals for boom hoist, boom telescoping based on ISO standard layout. Control lever stands can change neutral positions and tilt for easy access to cab.

Steel construction with sliding door access and

tinted safety glass windows opening at side, and operator's 5 way adjustable seat with headrest and armrest.

OUTRIGGER

4-hydraulically operated H-type outriggers. Each outrigger controlled simultaneously or independently from either side of carrier. Equipped with sight level gauge. Floats mounted integrally with the jacks retract to within vehicle width. All cylinders fitted with pilot check valves.

Crane operation with different extended length of each outrigger.

Equipped with extension width detector for each outrigger.

Extended width

Fully-----6,100 mm

Middle-----4,000 mm

Float size (Diameter) -----400 mm

TADANO Automatic Moment Limiter

Main unit in crane cab gives audible and visual warning of approach to overload. Automatically cuts out crane motions before overload. With working range (load radius and / or boom angle and / or tip height and / or swing range) limit function.

Nine functions are constantly displayed.

Either moment as percentage or main hydraulic pressure

Either boom angle or moment %

Either boom length or potential hook height

Either actual load radius or swing angle

Actual hook load

Permissible load

Either jib offset angle or number of parts of line of robe

Boom position indicator

Outrigger position indicator

FRONT JACK

Front outrigger mounted to the front frame of

carrier to permit 360°lifting capabilities.

Hydraulic cylinder fitted with pilot check valve. Equipped with front jack extension detector.

Float size (Diameter) -----260 mm

COUNTERWEIGHT

Integral with swing frame

Mass-----2.970 kg

DEMENSION

Overall length-----11,950mm

Overall width-----2,490mm

Overall height-----3,495mm

2. CARRIER SPECIFICATIONS

300 liters

MANUFACTURER

JING CHENG HEAVY INDUSTRY

EQUIPMENT

For superstructure Standard Equipment

3.5 ton hook

25 ton hook

3 working lights

External lamp (AML)

Cable follower

Electric fan

Sun visor

Sun shade

Cab floor mat

MODEL

BCW5331JQZ

ENGINE (EURO-III)

Model ISLE+300

Type 4 cycle, turbo charged, 6 cylinder in line, direct injection, water cooled diesel engine.

Emission: 8.9 L

Max. output---221/2,100 kW r/min

Max. torque--- 1250/1100~1600 N • m/r/min

For carrier Standard Equipment

Car heater

Windshield wiper

AM /FM radio

Speedometer

Sun visor

Tachometer

Low air pressure warning buzzer

Back-up alarm

Air filter warning light

Towing hook (Front and rear, Eye type)

Cigarette lighter

Spare tire

PTO hour meter

Safety belt

TRANSMISSION

Model: 8JS130T-B

8 forward and 1 reverse speeds

TIRES

Tire size: 11.00-20 18PR; 11.00R20 18PR

Tire quantity: 10

SELECTION SYSTEM

24V

FUEL TANK CAPACITY

Ashtray

Unit: kg

Outriggers fully extended 6.1m				
Load radius (m)	10.0m boom	17.4m boom	24.8m boom	32.2m boom
3.0	25,000	14,600		
3.5	25,000	14,600		
4.0	24,000	14,600	8,100	
4.5	22,000	14,600	8,100	
5.0	19,500	14,600	8,100	
5.5	17,500	14,000	8,100	6,500
6.0	16,000	13,500	8,100	6,500
6.5	14,500	12,800	8,100	6,500
7.0	13,000	12,200	8,100	6,500
7.5	11,500	11,200	7,900	6,300
8.0	10,000	10,200	7,600	6,000
9.0		8,500	7,000	5,500
10.0		7,000	6,200	5,000
12.0		5,000	5,000	4,300
14.0		3,500	4,000	3,700
16.0			3,000	3,000
18.0			2,400	2,600
20.0			1,800	2,000
22.0			1,500	1,600
24.0				1,300
26.0				1,000
28.0				800
30.0				600

Unit: kg

Outriggers extended to middle 4.0m				
Load radius (m)	10.0m boom	17.4m boom	24.8m boom	32.2m boom
3.0	25,000	14,600		
3.5	25,000	14,600		
4.0	20,000	14,600	8,100	
4.5	16,400	14,600	8,100	
5.0	13,000	12,500	8,100	
5.5	10,500	10,000	8,100	6,500
6.0	8,800	8,300	8,100	6,500
6.5	7,200	6,900	8,100	6,500
7.0	6,300	5,900	6,500	6,000
7.5	5,600	5,200	5,700	5,500
8.0	5,000	4,500	5,000	5,000
9.0		3,400	4,000	4,000
10.0		2,600	3,100	3,200
12.0		1,500	2,000	2,100
14.0		800	1,300	1,400
16.0			800	900
17.0			500	700
18.0				500
19.0				400

Unit : kg

Outriggers fully extended 6.1m		
Boom angle	32.2m	
	8.0mjib	
	5°	30°
80°	3,000	1,900
75°	2,800	1,750
70°	2,650	1,600
65°	2,150	1,500
60°	1,800	1,400
55°	1,400	1,230
50°	1,050	900
45°	750	700
40°	550	500
35°	400	350
30°	250	

Unit : kg

Outriggers extended to middle 4.0m		
Boom angle	32.2m	
	8.0m • jib	
	5°	30°
80°	3,000	1,900
75°	2,800	1,750
70°	1,800	1,350
65°	1,000	600
60°	500	400

Due to constant development, the specifications above mentioned are subject to change without notice.